

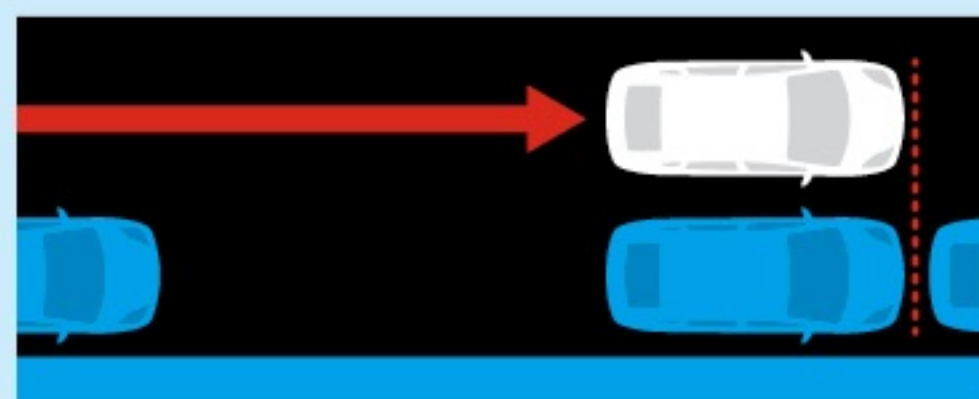
# How to parallel park like a boss



It's been called driving's trickiest maneuver. But parallel parking doesn't have to be hard, even if you don't have—or trust—any assistive technologies in your car. Here's how to master it in a few easy steps.

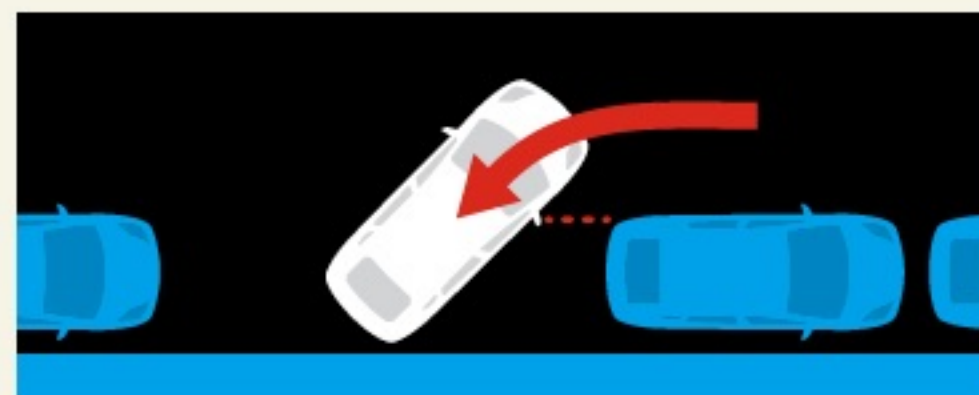
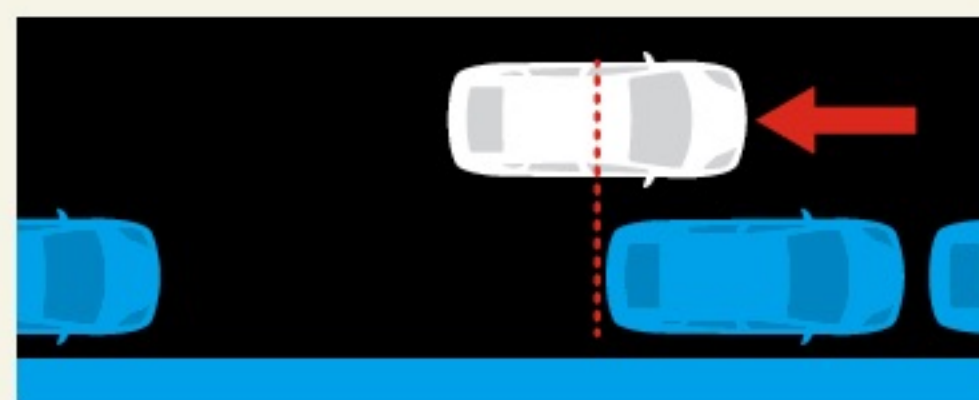
## 1 Size up the situation.

Choose a spot that's at least 1.5 times the length of your car. Pull up completely parallel to the car you aim to park behind. Use your turn signal to give other drivers a heads-up.



## 2 Put it in reverse.

Slowly back up until the middle of your car reaches the other car's back bumper. Turn the steering wheel sharply and head toward the curb at a 45-degree angle. When your passenger's side mirror lines up with the other car's back bumper, hit the brakes.



## 3 Set things straight.

Turn the steering wheel sharply in the other direction, then continue backing into the spot until your car aligns with the curb.



## 4 Curb your wheels.

Center your car in the spot within 12 inches of the curb. Set the parking brake. If you're on an incline, turn the front wheels so your car will roll into the curb if the brake fails.

